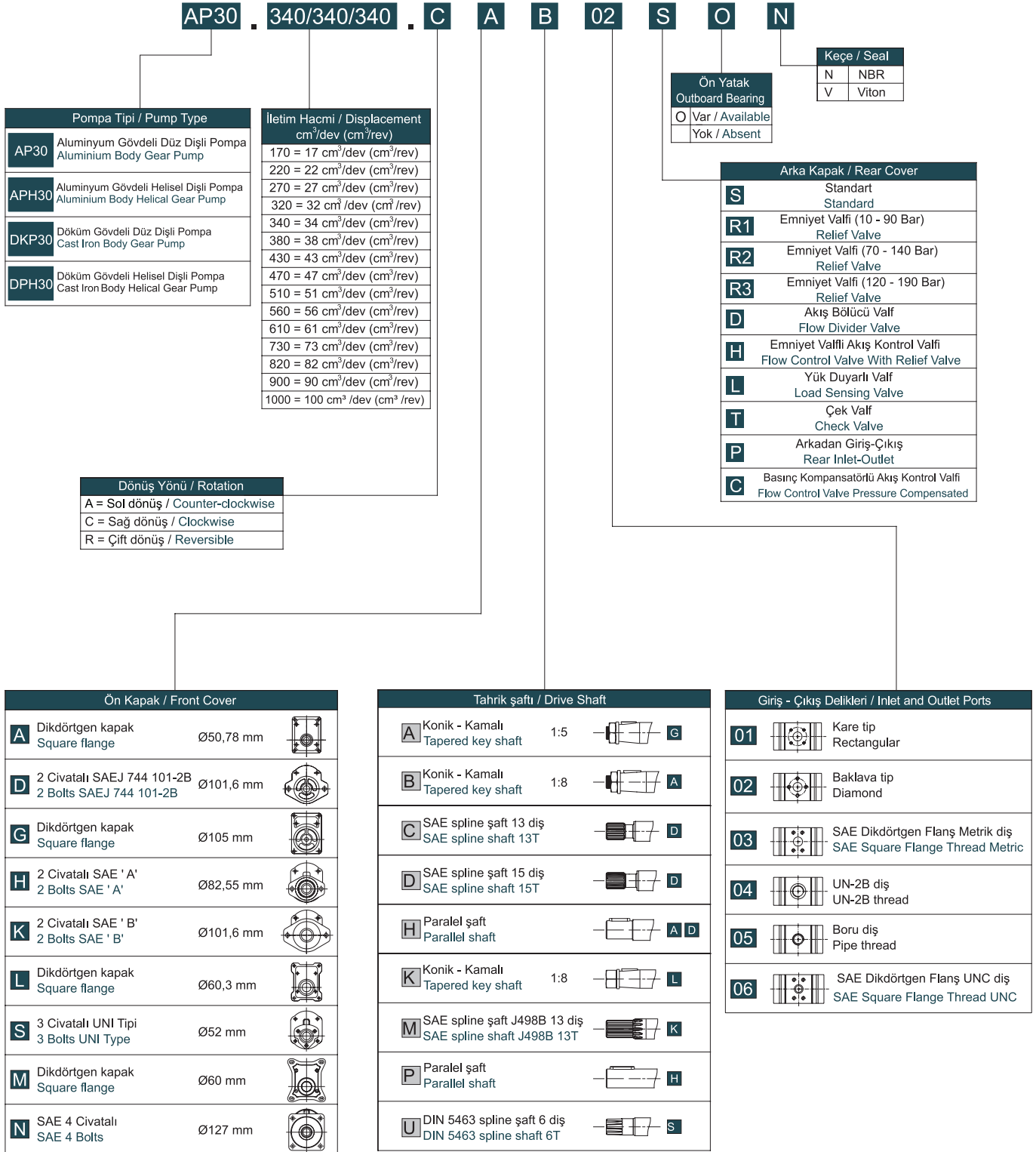
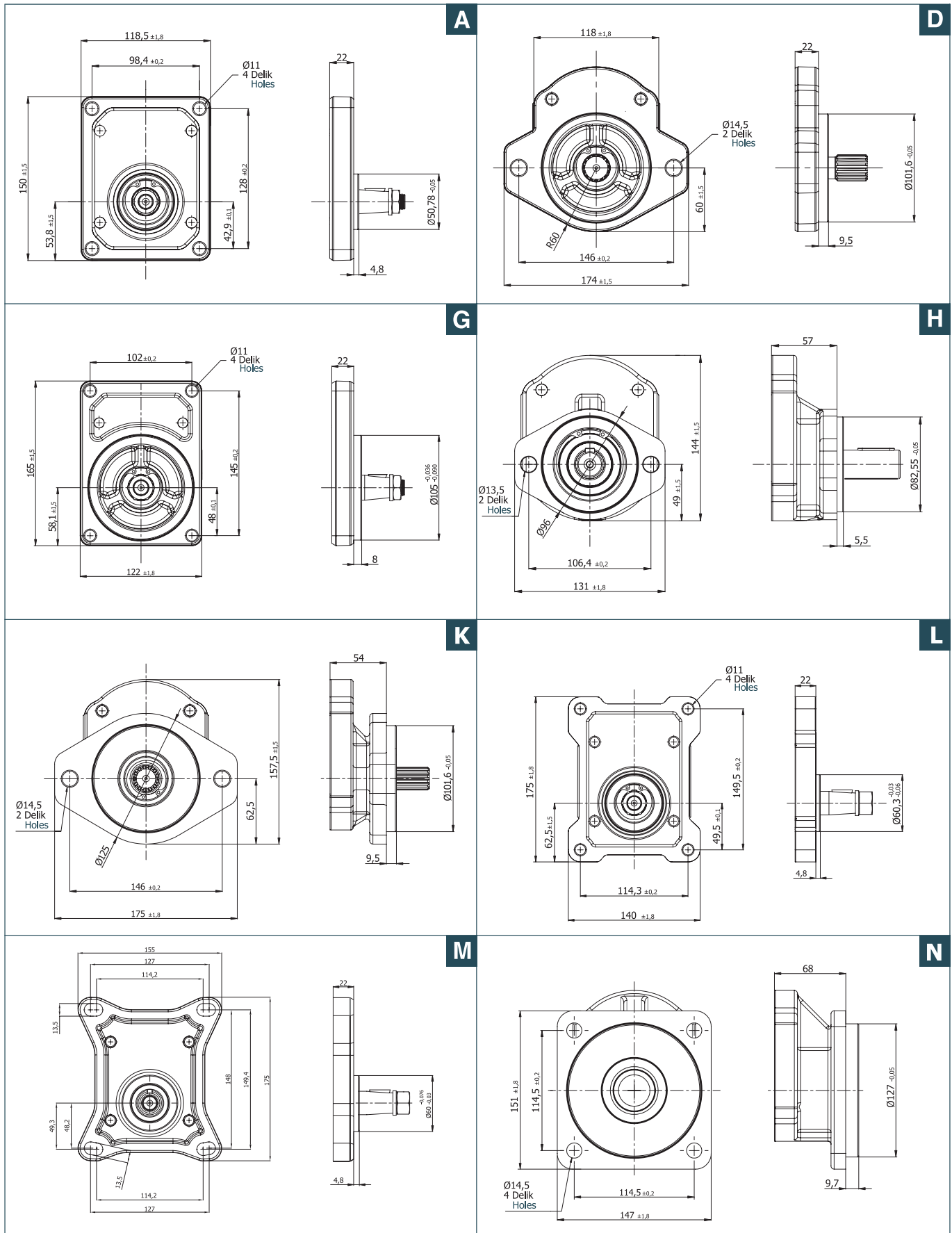
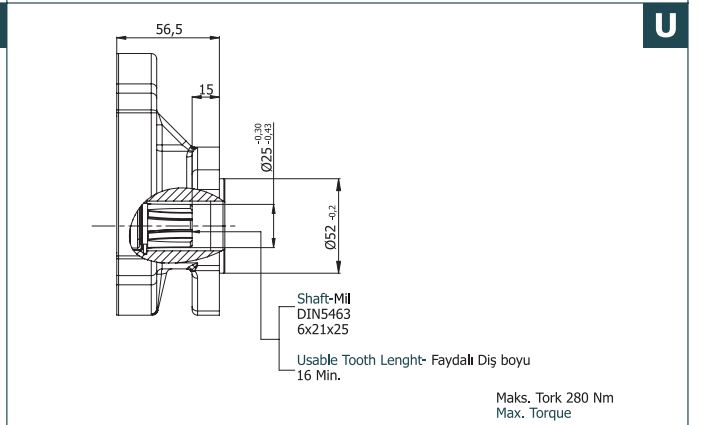
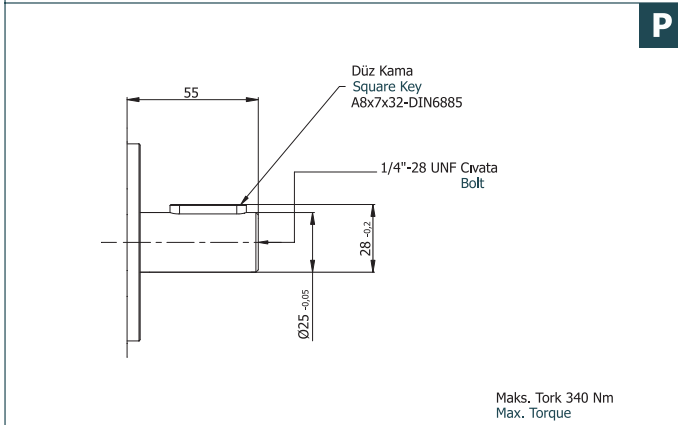
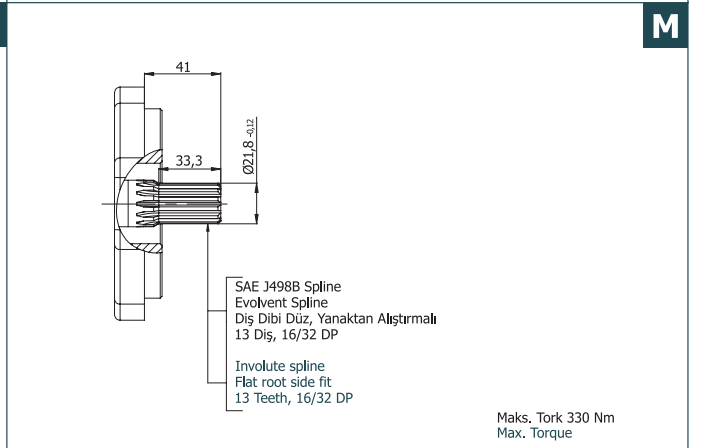
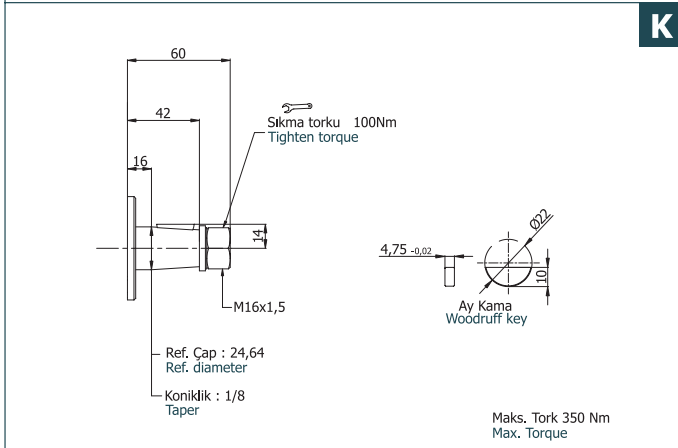
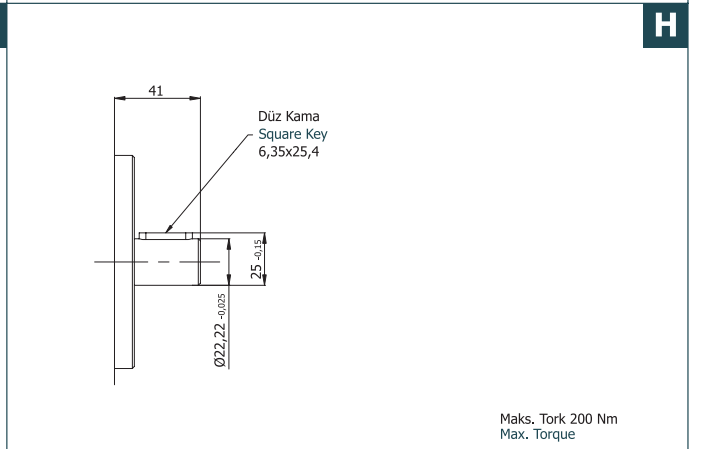
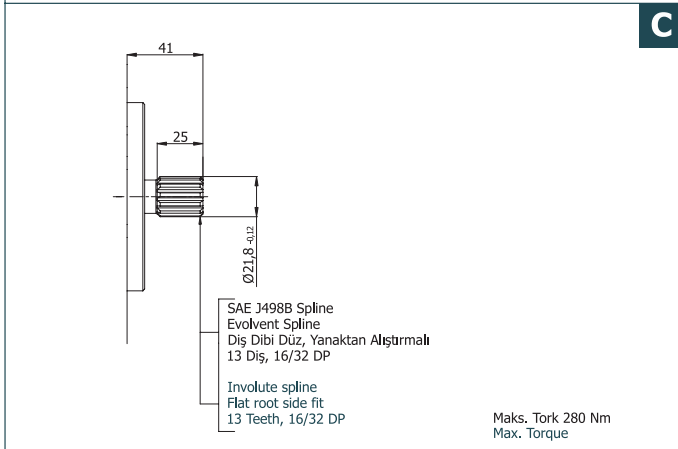
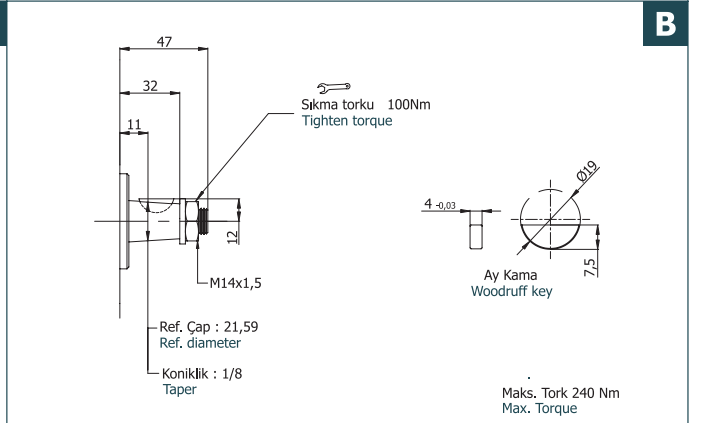
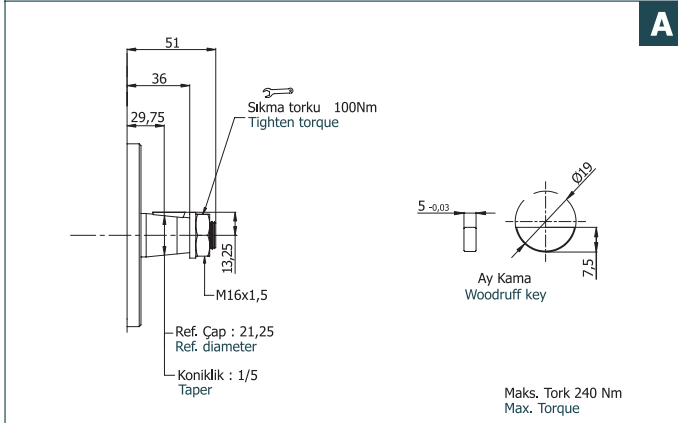
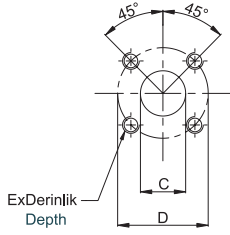


GRUP 30 POMPALARIN KODLAMA SİSTEMİ  
ORDERING CODE OF GROUP 30 PUMPS- Kodlama Örneği (Tekli) ; AP30.340.CAB02SN  
Code Example (Single)- Kodlama Örneği (Tandem) ; AP30.340/340/340.CAB02SN  
Code Example (Tandem)

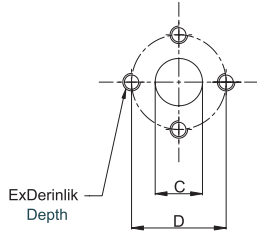






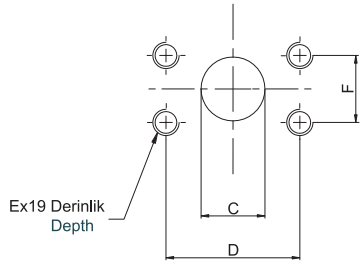
### 01 Kare Tipi Flanş Rectangular Flange

Sipariş Kodu Ordering Code	İletim Hacmi Displacement cm <sup>3</sup> /dev (rev)	Emiş Tarafı Suction Side			Basmaç Tarafı Pressure Side		
		C	D	E	c	d	e
01	17 - 100	27	55	M8x16	19	55	M8x16



### 02 Baklava Tipi Flanş Diamond Flange

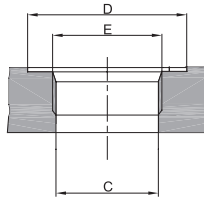
Sipariş Kodu Ordering Code	İletim Hacmi Displacement cm <sup>3</sup> /dev (rev)	Emiş Tarafı Suction Side			Basmaç Tarafı Pressure Side		
		C	D	E	c	d	e
02	17 - 61	27	51	M10x19	19	40	M8x16
	73 - 100	33	62	M12x19	27	51	M10x19



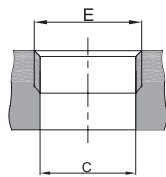
### 03 SAE Dikdörtgen Flanş Metrik Diş SAE Square Flange Metric Thread

Sipariş Kodu Ordering Code	İletim Hacmi Displacement cm <sup>3</sup> /dev (rev)	Emiş Tarafı Suction Side				Basmaç Tarafı Pressure Side			
		C	D	E	F	c	d	e	f
03	17 - 22	19	47,6	M8	22,2	12,5	38,1	M8	17,5
	27 - 34	25,4	52,4	M10	26,2	19	47,6	M8	22,2
	38 - 51	30,5	58,7		30,2	25,4	52,4	M10	26,2
	56 - 82	39,3	69,8	M12	35,7	30,5	58,7	M10	30,2
	90 - 100	51	77,8		42,9	39,3	69,8	M12	35,7

### 04 Diş / Thread (UN-2B) SAE Oring Boss

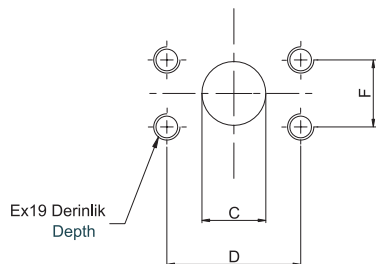


Sipariş Kodu Ordering Code	İletim Hacmi Displacement cm <sup>3</sup> /dev (rev)	Emiş Tarafı Suction Side			Basmaç Tarafı Pressure Side		
		C	D	E	c	d	e
04	17 - 34	30,5	49	1 5/16"-12 UN-2B	24,8	42	1 1/16"-12 UN-2B
	38 - 51	39,1	58	1 5/8"-12 UN-2B	30,5	49	1 5/16"-12 UN-2B
	56 - 100	45	65	1 7/8"-12 UN-2B	39,1	58	1 5/8"-12 UN-2B



### 05 Boru diş / Pipe Thread ISO228/1

Sipariş Kodu Ordering Code	İletim Hacmi Displacement cm <sup>3</sup> /dev (rev)	Emiş Tarafı Suction Side		Basmaç Tarafı Pressure Side	
		C	E	c	e
05	17 - 51	30,5	G 1	30,5	G 1
	56 - 73	39	G 1 1/4		
	82 - 100	45	G 1 1/2	39	G 1 1/4



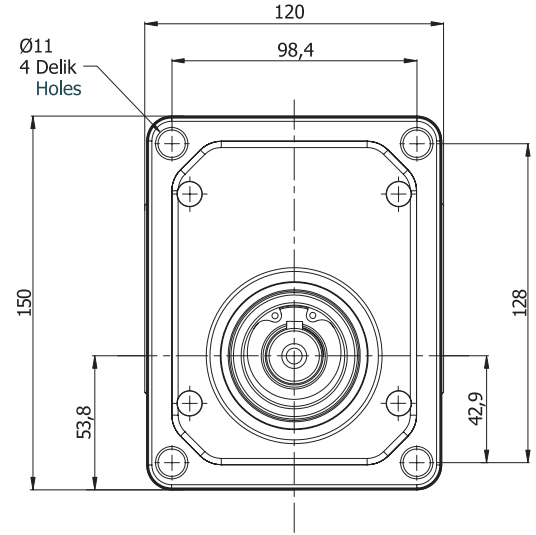
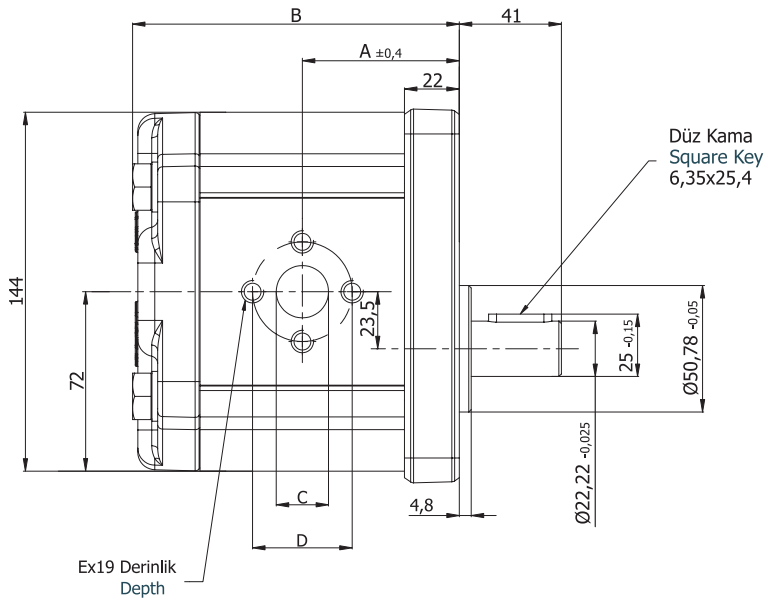
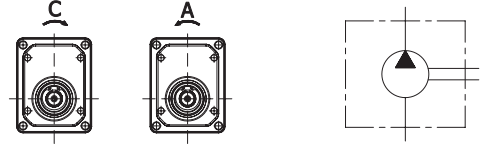
### 06 SAE Dikdörtgen Flanş UNC Diş SAE Square Flange UNC Thread

Sipariş Kodu Ordering Code	İletim Hacmi Displacement cm <sup>3</sup> /dev (rev)	Emiş Tarafı Suction Side			Basmaç Tarafı Pressure Side				
		C	D	E	c	d	e	f	
06	17 - 22	19	47,6	3/8-16 UNC-2B	22,2	12,5	38,1	5/16-18 UNC-2B	17,5
	27 - 34	25,4	52,4		26,2	19	47,6	3/8-16 UNC-2B	22,2
	38 - 51	30,5	58,7	7/16-14 UNC-2B	30,2	25,4	52,4		7/16-14 UNC-2B
	56 - 82	39,3	69,8	1/2-13 UNC-2B	35,7	30,5	58,7	1/2-13 UNC-2B	
	90 - 100	51	77,8		42,9	39,3	69,8		35,7



**A** Ön Kapak  
Front Cover

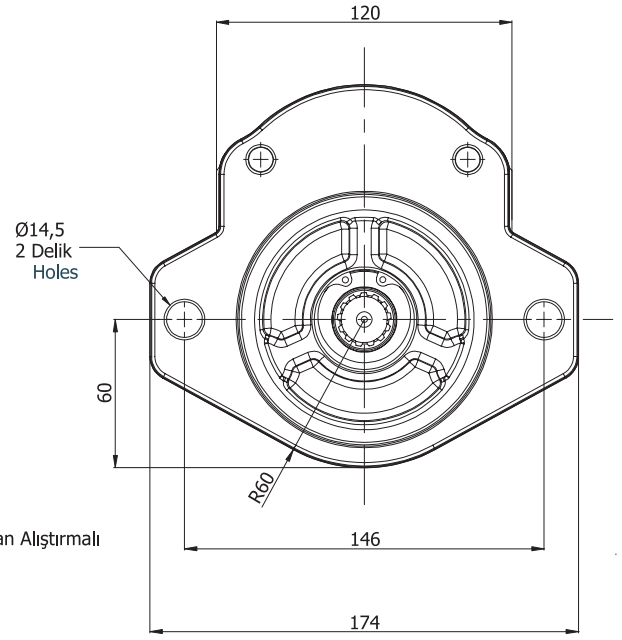
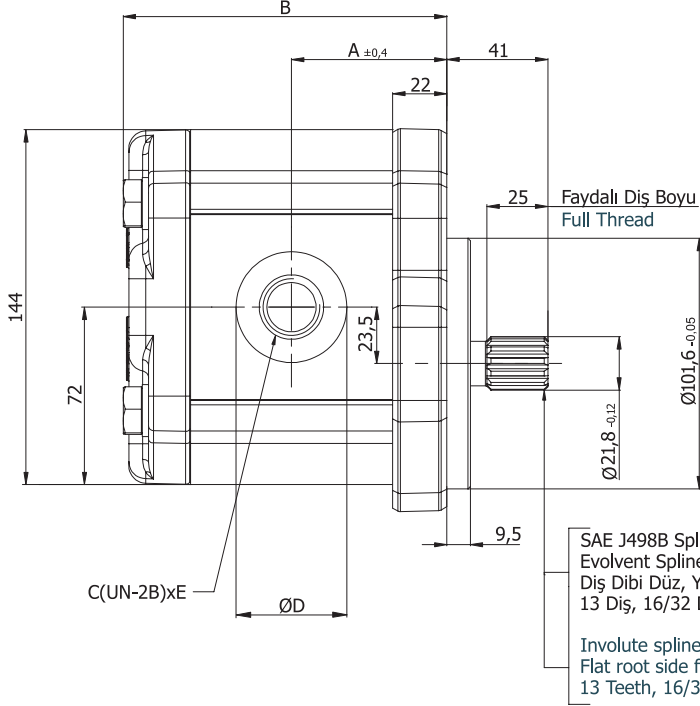
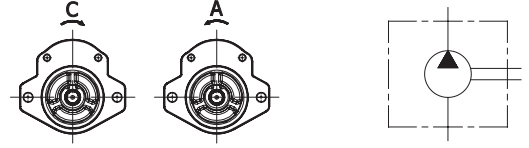
**H** Şaft Tipi  
Shaft Type



Pompa Tipi Pump Type	İletim Hacmi Displacement cm <sup>3</sup> /dev(cm <sup>3</sup> /rev)	Maks. Basınç Max. Pressure (bar)	Maks. Hız Max. Speed d/d (rpm)	A ±0,4	B	Giriş - Inlet			Çıkış - Outlet		
						C	D	E	c	d	e
AP30.170.A/CAH02SN	17,0	250	3000	59,5	124,1	27	51	M10x19	19	40	M8x16
AP30.220.A/CAH02SN	22,0			61,5	128,1						
AP30.270.A/CAH02SN	27,0			63,0	131,1						
AP30.320.A/CAH02SN	32,0	240		64,5	134,1						
AP30.340.A/CAH02SN	34,0			65,0	135,1						
AP30.380.A/CAH02SN	38,0			66,5	138,1						
AP30.430.A/CAH02SN	43,0	230	2500	68,0	141,1	33	62	M12x19	27	51	M10x19
AP30.470.A/CAH02SN	47,0			69,5	144,1						
AP30.510.A/CAH02SN	51,0			70,5	146,1						
AP30.560.A/CAH02SN	56,0	200		71,5	148,1						
AP30.610.A/CAH02SN	61,0	180		74,0	153,1						
AP30.730.A/CAH02SN	73,0	170		77,0	160,1						
AP30.820.A/CAH02SN	82,0	160	2000	80,0	166,1	33	62	M12x19	27	51	M10x19
AP30.900.A/CAH02SN	90,0	150		83,0	172,1						
AP30.1000.A/CAH02SN	100,0	140		86,0	178,1						

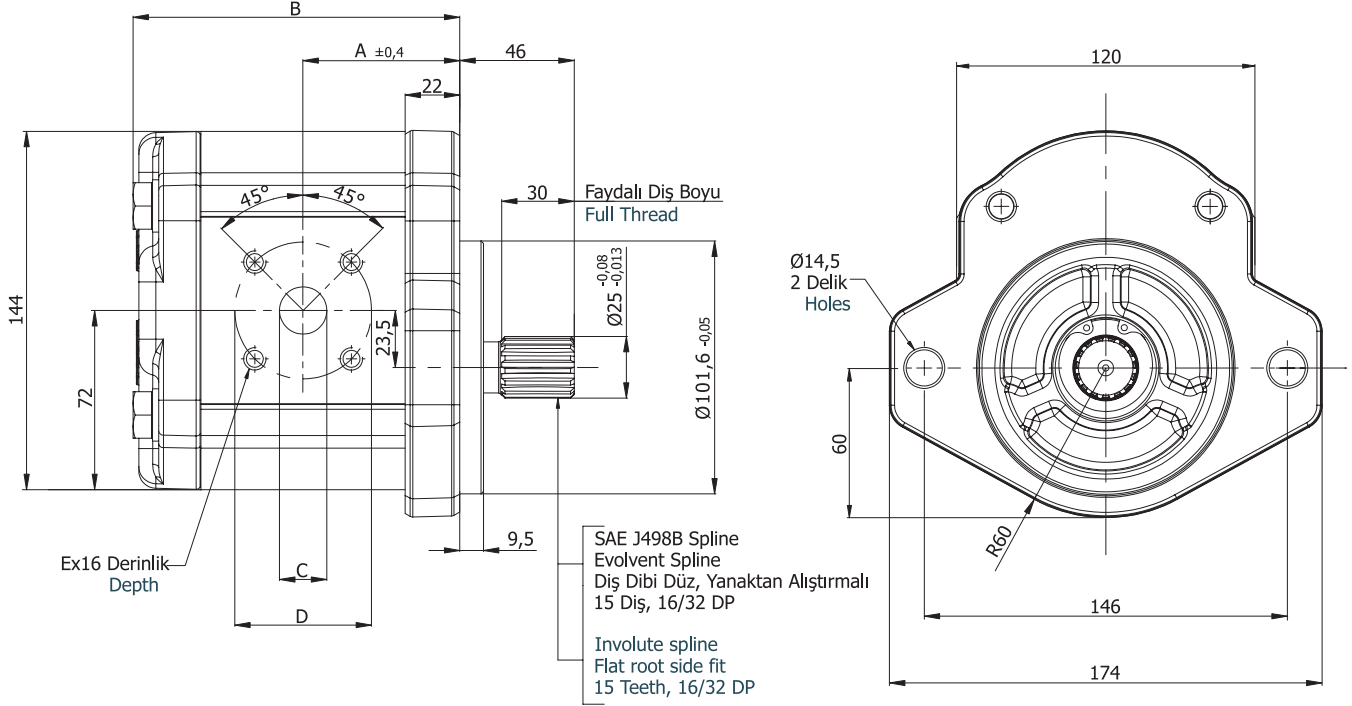
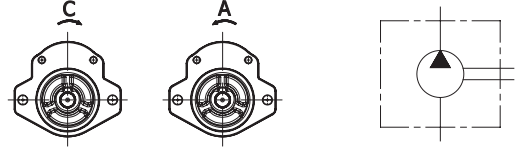
**D** Ön Kapak  
Front Cover

**C** Şaft Tipi  
Shaft Type



Pompa Tipi Pump Type	İletim Hacmi Displacement cm <sup>3</sup> /dev(cm <sup>3</sup> /rev)	Maks. Basınç Max. Pressure (bar)	Maks. Hız Max. Speed d/d (rpm)	A ±0,4	B	Giriş – Inlet			Çıkış - Outlet		
						C	D	E	c	d	e
AP30.170.A/CDC04SN	17,0	250	3000	59,5	124,1	30,5	49	1 5/16"-12 UNF-2B	24,8	42	1 1/16"-12 UNF-2B
AP30.220.A/CDC04SN	22,0			61,5	128,1						
AP30.270.A/CDC04SN	27,0			63,0	131,1						
AP30.320.A/CDC04SN	32,0			64,5	134,1						
AP30.340.A/CDC04SN	34,0			65,0	135,1						
AP30.380.A/CDC04SN	38,0	230	3000	66,5	138,1	39,1	58	1 5/8"-12 UNF-2B	30,5	49	1 5/16"-12 UNF-2B
AP30.430.A/CDC04SN	43,0			68,0	141,1						
AP30.470.A/CDC04SN	47,0			69,5	144,1						
AP30.510.A/CDC04SN	51,0			70,5	146,1						
AP30.560.A/CDC04SN	56,0			71,5	148,1						
AP30.610.A/CDC04SN	61,0	180	2500	74,0	153,1	45	65	1 7/8"-12 UNF-2B	39,1	58	1 5/8"-12 UNF-2B
AP30.730.A/CDC04SN	73,0	170		77,0	160,1						
AP30.820.A/CDC04SN	82,0	160		80,0	166,1						
AP30.900.A/CDC04SN	90,0	150		83,0	172,1						
AP30.1000.A/CDC04SN	100,0	140		86,0	178,1						

**D** Ön Kapak  
Front Cover

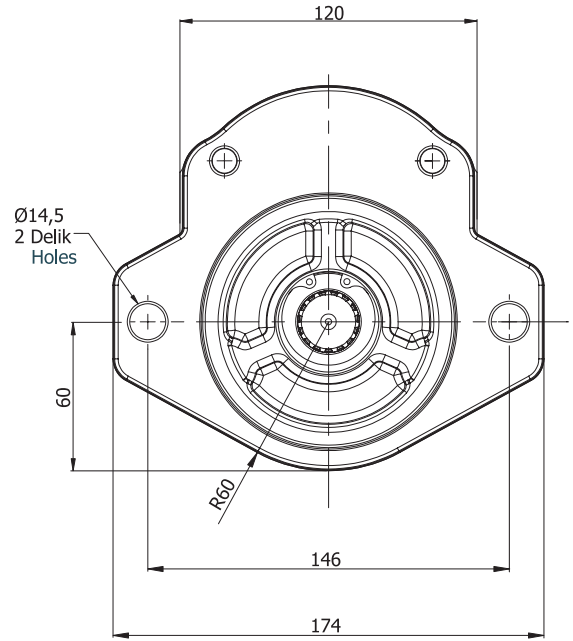
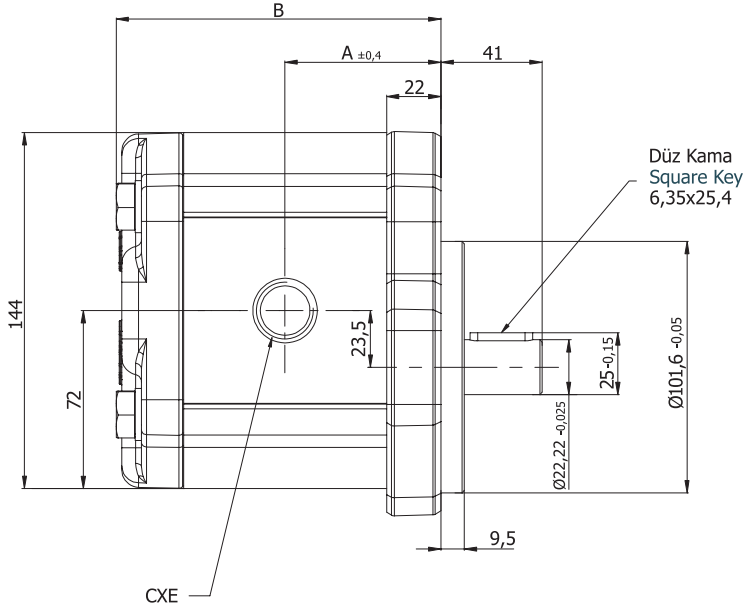
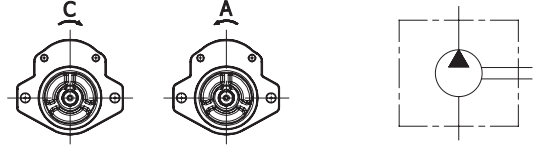
**D** Şaft Tipi  
Shaft Type


Pompa Tipi Pump Type	İletim Hacmi Displacement cm <sup>3</sup> /dev(cm <sup>3</sup> /rev)	Maks. Basınç Max. Pressure (bar)	Maks. Hız Max. Speed d/d (rpm)	A ±0,4	B	Giriş – Inlet			Çıkış - Outlet		
						C	D	E	c	d	e
AP30.170.A/CDD01SN	17,0	250	3000	59,5	124,1	27	55	M8x16	19	55	M8x16
AP30.220.A/CDD01SN	22,0			61,5	128,1						
AP30.270.A/CDD01SN	27,0			63,0	131,1						
AP30.320.A/CDD01SN	32,0	240		64,5	134,1						
AP30.340.A/CDD01SN	34,0			65,0	135,1						
AP30.380.A/CDD01SN	38,0			66,5	138,1						
AP30.430.A/CDD01SN	43,0	230	2500	68,0	141,1	27	55	M8x16	19	55	M8x16
AP30.470.A/CDD01SN	47,0			69,5	144,1						
AP30.510.A/CDD01SN	51,0			70,5	146,1						
AP30.560.A/CDD01SN	56,0	200		71,5	148,1						
AP30.610.A/CDD01SN	61,0			74,0	153,1						
AP30.730.A/CDD01SN	73,0			77,0	160,1						
AP30.820.A/CDD01SN	82,0	160	2000	80,0	166,1	27	55	M8x16	19	55	M8x16
AP30.900.A/CDD01SN	90,0			83,0	172,1						
AP30.1000.A/CDD01SN	100,0			86,0	178,1						

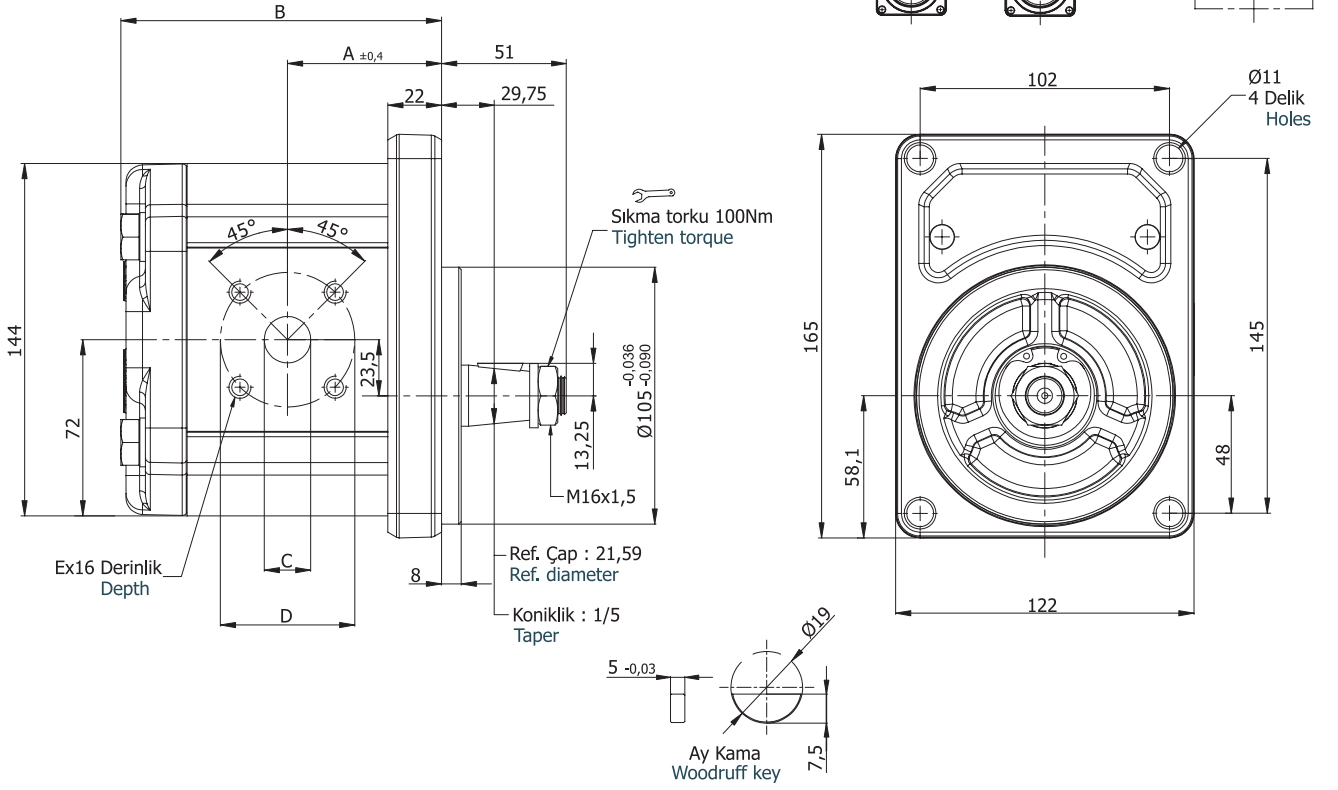


**D** Ön Kapak  
Front Cover

**H** Şaft Tipi  
Shaft Type



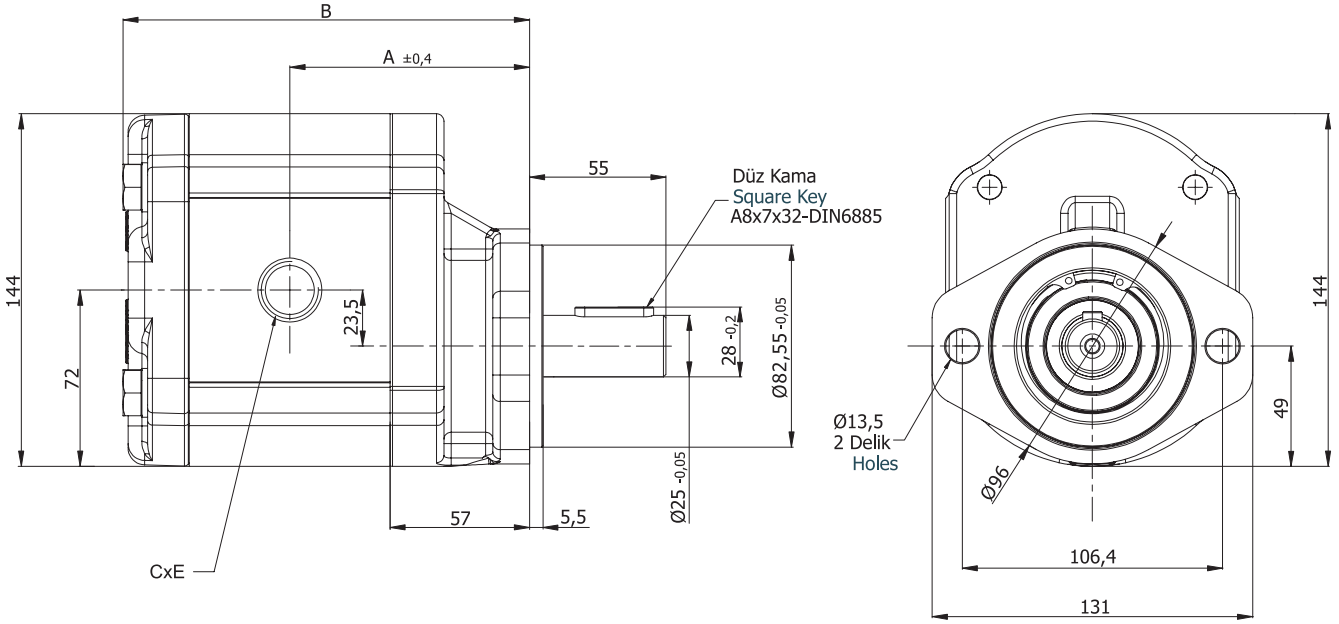
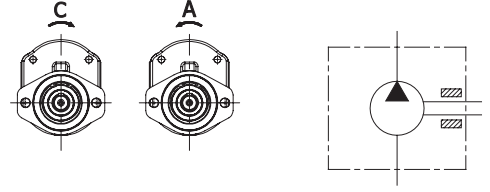
Pompa Tipi Pump Type	İletim Hacmi Displacement cm <sup>3</sup> /dev(cm <sup>3</sup> /rev)	Maks. Basınç Max. Pressure (bar)	Maks. Hız Max. Speed d/d (rpm)	A ±0,4	B	Giriş – Inlet		Çıkış - Outlet	
						C	E	c	e
AP30.170.A/CDH05SN	17,0	250	3000	59,5	124,1	30,5	G1"	30,5	G 1"
AP30.220.A/CDH05SN	22,0			61,5	128,1				
AP30.270.A/CDH05SN	27,0			63,0	131,1				
AP30.320.A/CDH05SN	32,0			64,5	134,1				
AP30.340.A/CDH05SN	34,0			65,0	135,1				
AP30.380.A/CDH05SN	38,0			66,5	138,1				
AP30.430.A/CDH05SN	43,0	230	2500	68,0	141,1	39	G 1 1/4"	39	G 1 1/4"
AP30.470.A/CDH05SN	47,0			69,5	144,1				
AP30.510.A/CDH05SN	51,0			70,5	146,1				
AP30.560.A/CDH05SN	56,0	200	2000	71,5	148,1	45	G 1 1/2"	39	G 1 1/4"
AP30.610.A/CDH05SN	61,0	180		74,0	153,1				
AP30.730.A/CDH05SN	73,0	170		77,0	160,1				
AP30.820.A/CDH05SN	82,0	160	2000	80,0	166,1	45	G 1 1/2"	39	G 1 1/4"
AP30.900.A/CDH05SN	90,0	150		83,0	172,1				
AP30.1000.A/CDH05SN	100,0	140		86,0	178,1				

G Ön Kapak  
Front CoverA Şaft Tipi  
Shaft Type

Pompa Tipi Pump Type	İletim Hacmi Displacement cm <sup>3</sup> /dev(cm <sup>3</sup> /rev)	Maks. Basınç Max. Pressure (bar)	Maks. Hız Max. Speed d/d (rpm)	A ±0,4	B	Giriş – Inlet			Çıkış - Outlet		
						C	D	E	c	d	e
AP30.170.A/CGA01SN	17,0	250	3000	59,5	124,1	27	55	M8x16	19	55	M8x16
AP30.220.A/CGA01SN	22,0			61,5	128,1						
AP30.270.A/CGA01SN	27,0			63,0	131,1						
AP30.320.A/CGA01SN	32,0	240		64,5	134,1						
AP30.340.A/CGA01SN	34,0			65,0	135,1						
AP30.380.A/CGA01SN	38,0			66,5	138,1						
AP30.430.A/CGA01SN	43,0	230	2500	68,0	141,1						
AP30.470.A/CGA01SN	47,0			69,5	144,1						
AP30.510.A/CGA01SN	51,0			70,5	146,1						
AP30.560.A/CGA01SN	56,0	200		71,5	148,1						
AP30.610.A/CGA01SN	61,0			74,0	153,1						
AP30.730.A/CGA01SN	73,0			77,0	160,1						
AP30.820.A/CGA01SN	82,0	160	2000	80,0	166,1						
AP30.900.A/CGA01SN	90,0			83,0	172,1						
AP30.1000.A/CGA01SN	100,0			86,0	178,1						

**H** Ön Kapak  
Front Cover

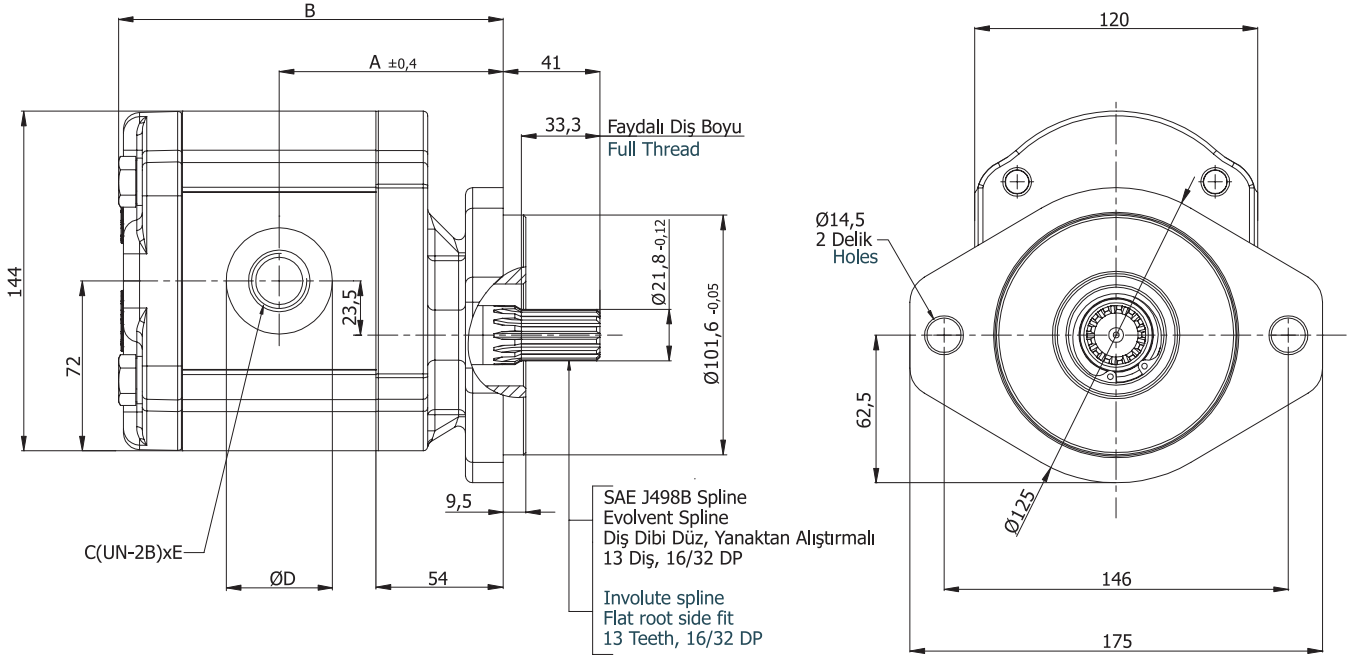
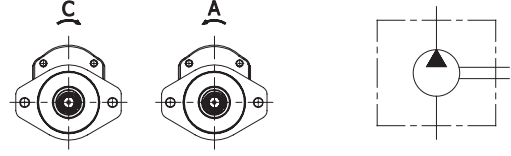
**P** Şaft Tipi  
Shaft Type



Pompa Tipi Pump Type	İletim Hacmi Displacement cm <sup>3</sup> /dev(cm <sup>3</sup> /rev)	Maks. Basınç Max. Pressure (bar)	Maks. Hız Max. Speed d/d (rpm)	A ±0,4	B	Giriş – Inlet		Çıkış - Outlet	
						C	E	c	e
AP30.170.A/CHP05SN	17,0	250	3000	94,5	159,1	30,5	G1"	30,5	G 1"
AP30.220.A/CHP05SN	22,0			96,5	163,1				
AP30.270.A/CHP05SN	27,0			98,0	166,1				
AP30.320.A/CHP05SN	32,0	99,5		169,1					
AP30.340.A/CHP05SN	34,0	100,0		170,1					
AP30.380.A/CHP05SN	38,0	101,5		173,1					
AP30.430.A/CHP05SN	43,0	230	2500	103,0	176,1	39	G 1 1/4"	39	G 1 1/4"
AP30.470.A/CHP05SN	47,0			104,5	179,1				
AP30.510.A/CHP05SN	51,0			105,5	181,1				
AP30.560.A/CHP05SN	56,0	106,5		183,1					
AP30.610.A/CHP05SN	61,0	109,0		188,1					
AP30.730.A/CHP05SN	73,0	170		112,0	195,1				
AP30.820.A/CHP05SN	82,0	160	115,0	201,1					
AP30.900.A/CHP05SN	90,0	150	118,0	207,1					
AP30.1000.A/CHP05SN	100,0	140	121,0	213,1					

**K** Ön Kapak  
Front Cover

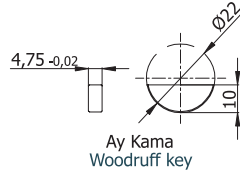
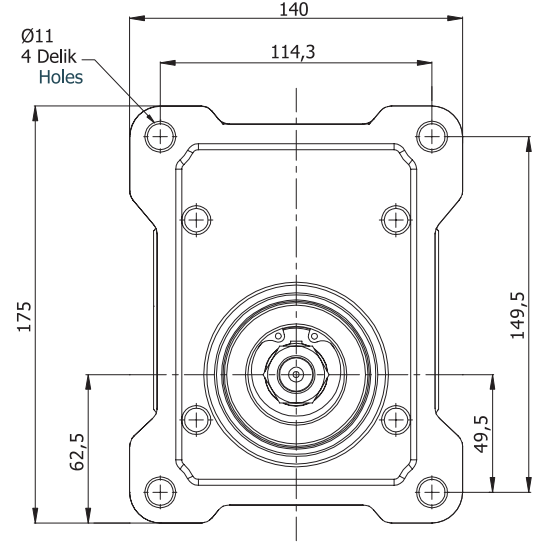
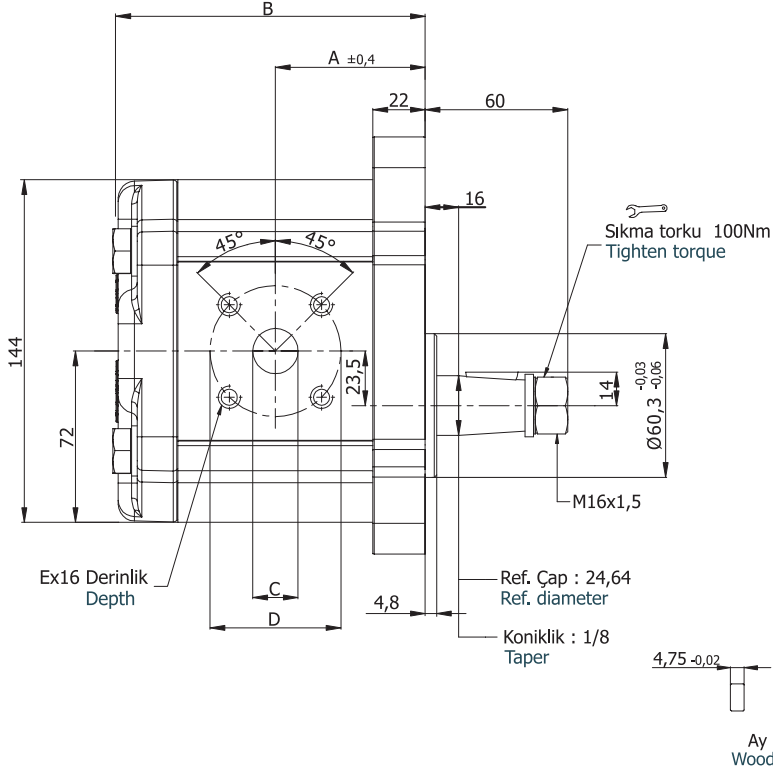
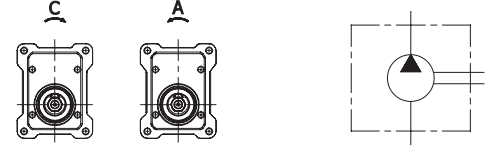
**M** Şaft Tipi  
Shaft Type



Pompa Tipi Pump Type	İletim Hacmi Displacement cm <sup>3</sup> /dev(cm <sup>3</sup> /rev)	Maks. Basınç Max. Pressure (bar)	Maks. Hız Max. Speed d/d (rpm)	A ±0,4	B	Giriş – İlet			Çıkış - Outlet		
						C	D	E	c	d	e
AP30.170.A/CKM04SN	17,0	250	3000	91,5	156,1	30,5	49	1 5/16"-12 UNF-2B	24,8	42	1 1/16"-12 UNF-2B
AP30.220.A/CKM04SN	22,0			93,5	160,1						
AP30.270.A/CKM04SN	27,0			95,0	163,1						
AP30.320.A/CKM04SN	32,0			96,5	166,1						
AP30.340.A/CKM04SN	34,0			97,0	167,1						
AP30.380.A/CKM04SN	38,0	230	2500	98,5	170,1	39,1	58	1 5/8"-12 UNF-2B	30,5	49	1 5/16"-12 UNF-2B
AP30.430.A/CKM04SN	43,0			100,0	173,1						
AP30.470.A/CKM04SN	47,0			101,5	176,1						
AP30.510.A/CKM04SN	51,0			102,5	178,1						
AP30.560.A/CKM04SN	56,0			103,5	180,1						
AP30.610.A/CKM04SN	61,0	170	1500	106,0	185,1	45	65	1 7/8"-12 UNF-2B	39,1	58	1 5/8"-12 UNF-2B
AP30.730.A/CKM04SN	73,0			109,0	192,1						
AP30.820.A/CKM04SN	82,0			112,0	198,1						
AP30.900.A/CKM04SN	90,0			115,0	204,1						
AP30.1000.A/CKM04SN	100,0			118,0	210,1						

**L** Ön Kapak  
Front Cover

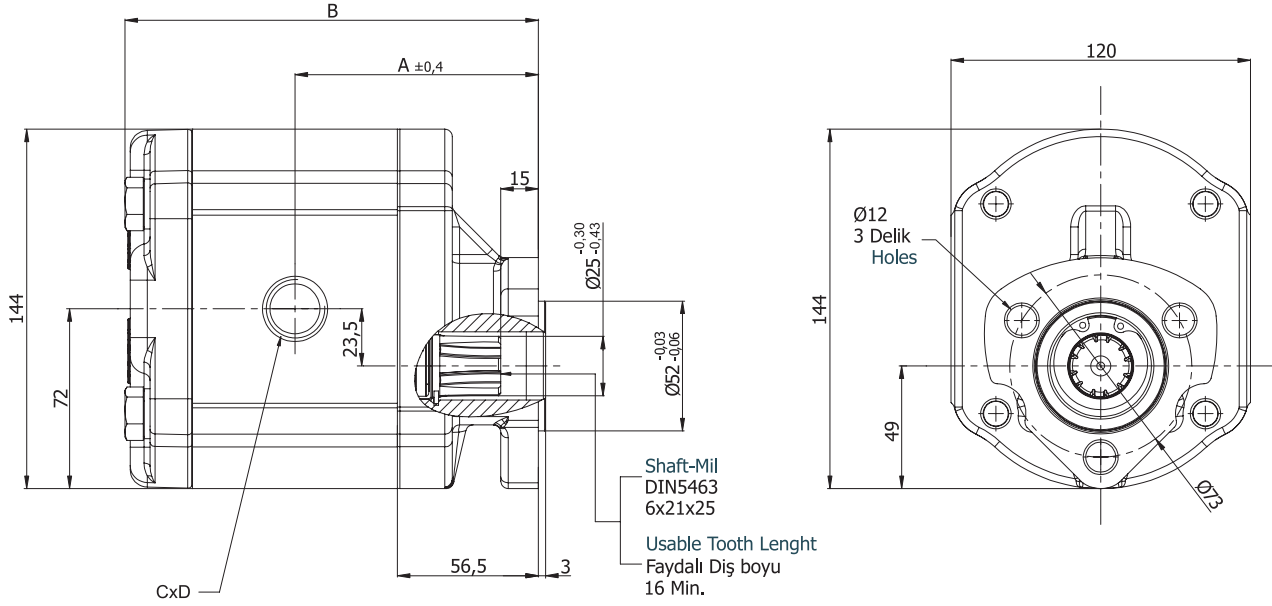
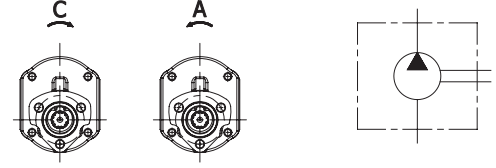
**K** Şaft Tipi  
Shaft Type



Pompa Tipi Pump Type	İletim Hacmi Displacement cm <sup>3</sup> /dev(cm <sup>3</sup> /rev)	Maks. Basınç Max. Pressure (bar)	Maks. Hız Max. Speed d/d (rpm)	A ±0,4	B	Giriş - Inlet			Çıkış - Outlet		
						C	D	E	c	d	e
AP30.170.A/CLK01SN	17,0	250	3000	59,5	124,1	27	55	M8x16	19	55	M8x16
AP30.220.A/CLK01SN	22,0			61,5	128,1						
AP30.270.A/CLK01SN	27,0			63,0	131,1						
AP30.320.A/CLK01SN	32,0	240	3000	64,5	134,1						
AP30.340.A/CLK01SN	34,0			65,0	135,1						
AP30.380.A/CLK01SN	38,0			66,5	138,1						
AP30.430.A/CLK01SN	43,0	230	3000	68,0	141,1						
AP30.470.A/CLK01SN	47,0			69,5	144,1						
AP30.510.A/CLK01SN	51,0			70,5	146,1						
AP30.560.A/CLK01SN	56,0	200	2500	71,5	148,1						
AP30.610.A/CLK01SN	61,0			74,0	153,1						
AP30.730.A/CLK01SN	73,0			77,0	160,1						
AP30.820.A/CLK01SN	82,0	160	2000	80,0	166,1						
AP30.900.A/CLK01SN	90,0			83,0	172,1						
AP30.1000.A/CLK01SN	100,0			86,0	178,1						

**S** Ön Kapak  
Front Cover

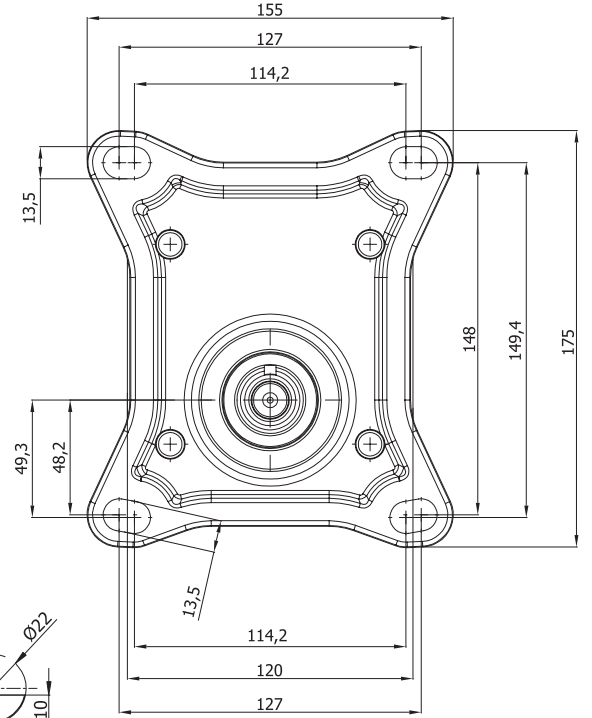
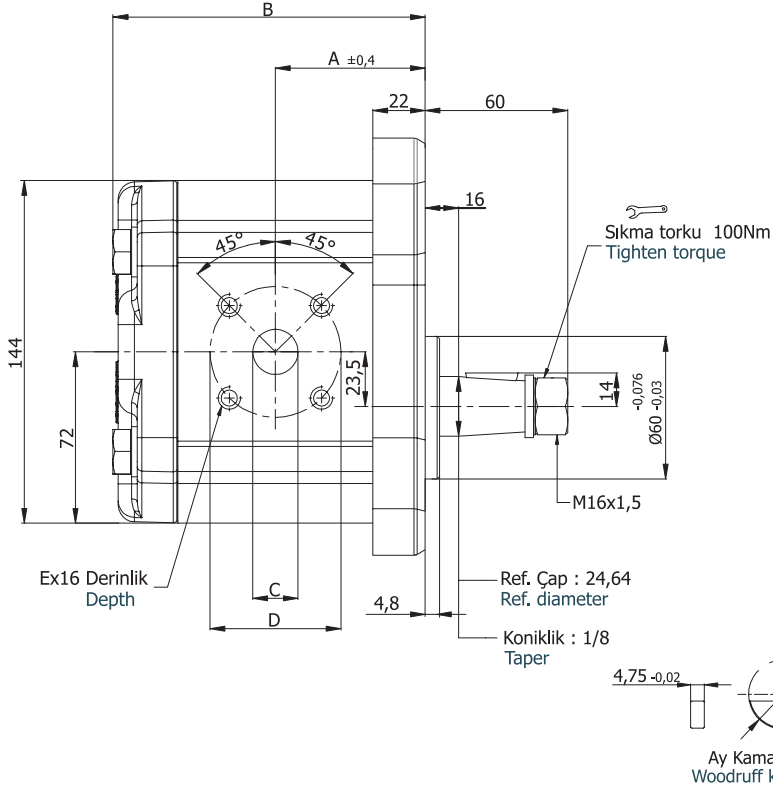
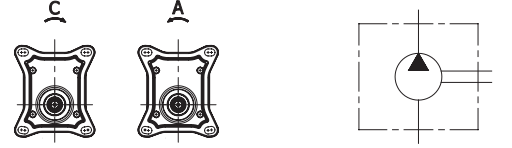
**U** Şaft Tipi  
Shaft Type



Pompa Tipi Pump Type	İletim Hacmi Displacement cm <sup>3</sup> /dev(cm <sup>3</sup> /rev)	Maks. Basınç Max. Pressure (bar)	Maks. Hız Max. Speed d/d (rpm)	A ±0,4	B	Giriş – Inlet		Çıkış - Outlet	
						C	E	c	e
AP30.170.A/CSU05SN	17,0	250	3000	94,0	158,6	30,5	G1"	30,5	G 1"
AP30.220.A/CSU05SN	22,0			96,0	162,6				
AP30.270.A/CSU05SN	27,0	97,5		165,6					
AP30.320.A/CSU05SN	32,0	99,0		168,6					
AP30.340.A/CSU05SN	34,0	99,5		169,6					
AP30.380.A/CSU05SN	38,0	101,0		172,6					
AP30.430.A/CSU05SN	43,0	230	2500	102,5	175,6	39	G 1 1/4"	39	G 1 1/4"
AP30.470.A/CSU05SN	47,0			104,0	178,6				
AP30.510.A/CSU05SN	51,0	105,0		180,6					
AP30.560.A/CSU05SN	56,0	106,0		182,6					
AP30.610.A/CSU05SN	61,0	108,5		187,6					
AP30.730.A/CSU05SN	73,0	111,5		194,6					
AP30.820.A/CSU05SN	82,0	160	2000	114,5	200,6	45	G 1 1/2"	39	G 1 1/4"
AP30.900.A/CSU05SN	90,0	150		117,5	206,6				
AP30.1000.A/CSU05SN	100,0	140		120,5	212,6				

**M** Ön Kapak  
Front Cover

**K** Şaft Tipi  
Shaft Type



Pompa Tipi Pump Type	İletim Hacmi Displacement cm <sup>3</sup> /dev(cm <sup>3</sup> /rev)	Maks. Basınç Max. Pressure (bar)	Maks. Hız Max. Speed d/d (rpm)	A ±0,4	B	Giriş – Inlet			Çıkış - Outlet		
						C	D	E	c	d	e
AP30.170.A/CMK01SN	17,0	250	3000	59,5	124,1	27	55	M8x16	19	55	M8x16
AP30.220.A/CMK01SN	22,0			61,5	128,1						
AP30.270.A/CMK01SN	27,0			63,0	131,1						
AP30.320.A/CMK01SN	32,0			64,5	134,1						
AP30.340.A/CMK01SN	34,0			65,0	135,1						
AP30.380.A/CMK01SN	38,0			66,5	138,1						
AP30.430.A/CMK01SN	43,0	230	2500	68,0	141,1	27	55	M8x16	19	55	M8x16
AP30.470.A/CMK01SN	47,0			69,5	144,1						
AP30.510.A/CMK01SN	51,0			70,5	146,1						
AP30.560.A/CMK01SN	56,0	200	2500	71,5	148,1	27	55	M8x16	19	55	M8x16
AP30.610.A/CMK01SN	61,0	180	74,0	153,1							
AP30.730.A/CMK01SN	73,0	170	77,0	160,1							
AP30.820.A/CLK01SN	82,0	160	2000	80,0	166,1	27	55	M8x16	19	55	M8x16
AP30.900.A/CMK01SN	90,0	150	83,0	172,1							
AP30.1000.A/CMK01SN	100,0	140	86,0	178,1							